



ARBO MASTER

Fully adjustable work positioning harness with a unique motion system at front attachment points, specially invented for professional arborists allowing freedom of movement at the tree top.

DESCRIPTION

Moveable O ring at the connection bridge as an attachment point (EN 813).

Double rope connection bridge for 2 independent attachment points (EN 813) with a strength 15 kN.

Removable and exchangeable bridge connecting the leg loops for variability of work at the tree top.

Adjustable red side D rings between the leg loops and waist belt for the attachment point, used in a pair according to EN 813 with a strength 15 kN.

Speed buckles enable fluent and fast adjustment of the waist belt and the leg loops, keep the adjusted size.

Adjustable side positioning D rings (EN 358) possible to fold in when not in use.

2 red textile loops with a load capacity of 5 kg for attaching a hand saw.

Knots on the connection bridge allow the length adjustment and replacement.

Small textile loops to create your own additional gear loops with a load capacity of 5 kg.

One of three loops for attaching ARBO CHEST.

Wide rubber band for attaching the first aid kit to the harness.

2 small steel rings with a load capacity of 10 kg for attaching the chainsaw on the left and right side.

2 gear loops with a bearing capacity of 5 kg provide enough space for your gear.

Rear loop for hanging heavy tools such as a chainsaw, etc. with a load capacity of 35 kg.

Flexible rear rubber bands for adjusting the position of the leg loops.

Neoprene pocket on the leg loop for small items.

KEY FEATURES

- double rope connection bridge with the moveable O ring
- neoprene pocket on the leg loop
- loops to attach the chest harness



STANDARDS

CE 1019

EN 358
EN 813

FEATURES



120 kg



1680 g / 59.3 oz (S/M/L)
1760 g / 62 oz (XL)



3
YEARS
warranty

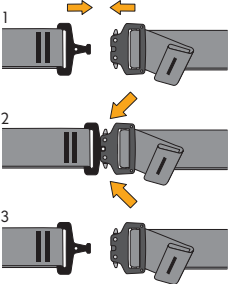
MATERIALS



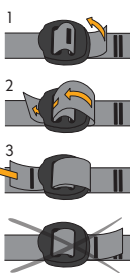
- 21 % PAD
- 20 % light alloy
- 19 % PES
- 15 % PE
- 11 % EVA foam
- 10 % steel
- 2 % PP
- 1 % TPU
- 1 % elastane

TECHNICAL DATA

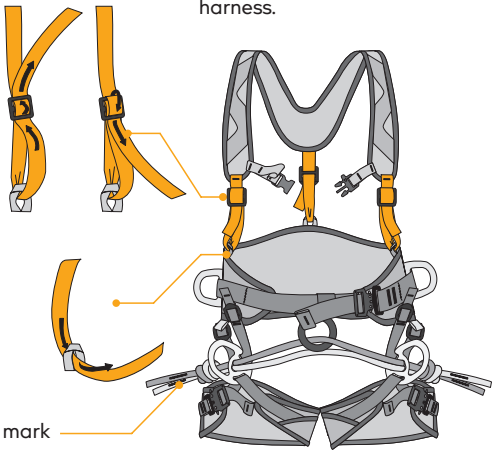
SPEED buckle



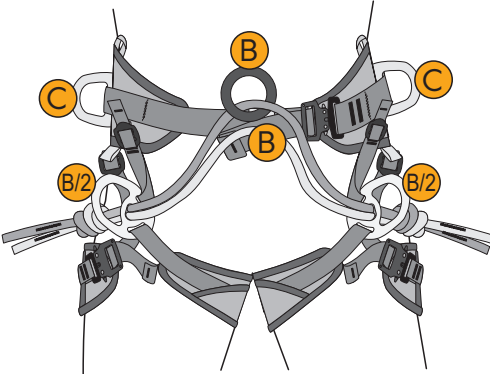
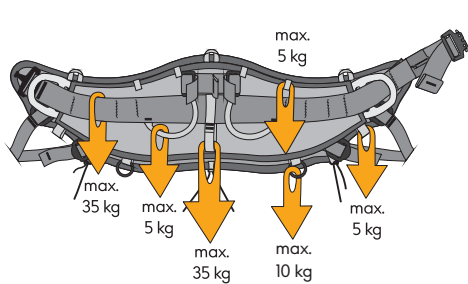
threading through buckle



Loops at the waist belt for the possibility of attaching a chest harness.



TECHNICAL DATA



- B EN 813:08
- C EN 358:18

SIZE CHART



	S/M/L	XL
A [cm/in]	65-100 / 25-39	85-130 / 33-51
B [cm/in]	45-65 / 18-25	55-75 / 22-29
M [g]	1680	1760

MAINTENANCE

Lifetime of this product depends on the frequency and the environment (salt, sand, moisture, chemicals, etc.) in which is used. Without taking wear or mechanical damage into account and in compliance with the conditions specified in the instructions for use this product may be used 15 years from the date of production and 10 years from the date of the first use. However mechanical damage can occur during the first use, which can limit the lifetime of this products only to its first use.



beware of salt



beware of UV



beware of chemicals



washing



drying



read instructions



OTHER VIEWS



BACK VIEW: Wide rubber band for attaching the first aid kit to the harness. Neoprene pocket on the leg loop for small items.



SIDE VIEW: Slots for PORTER tool holder to carry your industrial tools.



COMPARISON

ARBOMASTER - TIMBER3D

- double rope connection bridge for two independent attachment points
- removable and exchangeable bridge connecting the leg loops for variability of work
- adjustable red side D rings between the leg loops and waist belt for the attachment point
- replaceable adjusting webbing for D rings
- improved waist belt ergonomics, wide comfortable waist belt
- 180 g lighter (size S/M/L)
- improved first aid kit attachment system
- possibility of attaching a chest harness



TIMBER 3D

RELATED PRODUCTS



ARBO CHEST
W0108BR00

STANDARDS	-
WEIGHT	160 g

